



At Incoperfil, continuous innovation is our main strategy, the products we offer are the result of more than 35 years of direct collaboration with all project agents in search of the most efficient construction solutions.

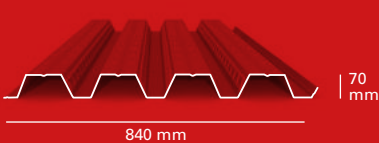
We make available to your project all our knowledge, tools and experience so that it can materialize according to your expectations.

Production Plant Gourmet S.A. (Valencia) - Spain
2.500 m² of INCO 100.3 Composite Slab





INCO 70.4 Composite Slab



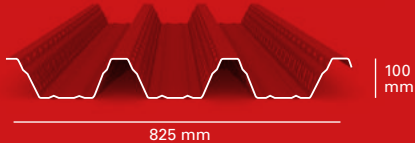
Manunufacturing length (m): min 2 / max 12				
Thickness (mm) / Weight (kg/m²)				
0,75	0,8	1,0	1,2	
8,77	9,35	11,69	14,02	

INCO 100.3 Composite Slab



Manunufacturing length (m): min 2 / max 24				
Thickness (mm) / Weight (kg/m²)				
0,75	0,8	1,0	1,2	1,5
8,93	9,52	11,9	14,28	17,85

INCO 100.3 R Composite Slab



Manunufacturing length (m): min 2 / max 24				
Thickness (mm) / Weight (kg/m²)				
0,75	0,8	1,0	1,2	1,5
8,93	9,52	11,9	14,28	17,85

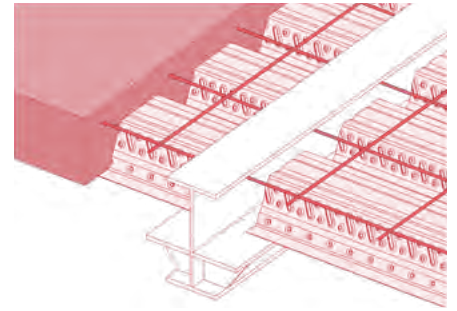
Composite slab system



Quick and light forging solutions for your project. Our range of composite slab profiles are designed to support the weight of the concrete and the execution loads during the construction phase, in addition to collaborating at a resistant level with the concrete once it has set.

- › Versatile systems that adapt to any type of structure
- › Reduce execution time
- › They achieve fire resistance of up to REI 240 without the need to inject insulation
- › Allow spans of up to 5m without shoring

- › Arrange the floor slab embedded in the structure to increase free height



Hipódromo de Longchamp (Paris) - Francia
5.000 m² INCO 70.4 Colaborante



Featured Products

INCO 70.4 Composite Slab



- › Maximizes clearance between floors
- › Without shoring up to 4 m
- › Thickness: 0,75 – 1,2 mm
- › Forging edges from 110 mm
- › Up to 2.000 m² / transport

INCO 100.3 Composite Slab



- › Light and strong
- › Without shoring up to 5 m
- › Thickness: 0,75 – 1,5 mm
- › Forging edges from 140 mm
- › Up to 1.600 m² / transport

INCO 100.3 R Composite Slab

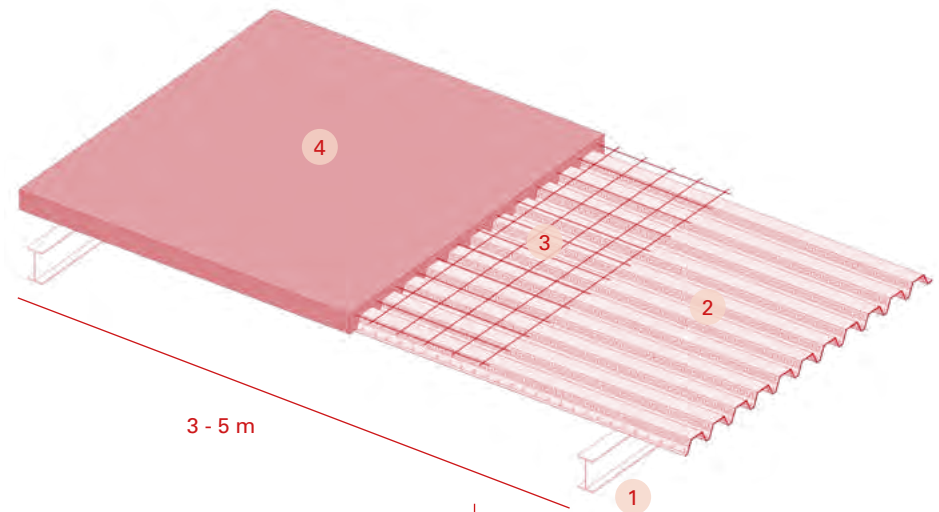


- › Robustness and acoustic comfort
- › Fire resistance and mixed beams
- › Thickness: 0,75 – 1,5 mm
- › Forging edges from 140 mm
- › Up to 1.600 m² / transport

Composite Slab

- › Speed up the assembly using only a mesh as a negative assembly
- › Provide a secure work platform during the implementation phase
- › It works as a bracing for the structure during its installation.
- › Request technical support and specific calculation reports for your project

1. Main structure
2. Composite slab
3. Reinforcement
4. Concrete



Support:

INCO 70.4 Composite Slab INCO 100.3 Composite Slab INCO 100.3 R Composite Slab



Start designing
your composite slab:

www.incoperfil.com/composite_slab

Start designing your project



Find on our website all the technical documentation you need to start designing your project.

www.incoperfil.com/solution



You have forms to request a specific report for your project.

www.incoperfil.com/cas



Request support from our technical department to design and select the most suitable system.

dpto_tecnico@incoperfil.com

Materials

Outdoor environment / Years guaranteed durability

C2	Low-pollution atmospheres. Rural areas
C3	Urban or industrial areas with medium pollution
C3M	Marine or coastal areas. 3 to 20 km from the sea
C4	Industrial areas High pollution
C4M	Seaside. Moderate salinity. From 1 to 3 km away from the sea.
C5M	Coastal and offshore areas with high salinity. 300 m to 1 km from the sea
UV	Areas with high exposure to UV rays
G	Animal farms

10	15	20	25	30	35
SP25	PVDF25	PVDF35 HDS35 HDX55	HDX55	HDX55+	
HDS35	HDX55				
PVDF35 HDX55	HDX55+				
HDX55+					
PVDF25	PVDF35 HDS35 HDX55	ZM310			
FARM35+					

Indoor environment

A1	Offices, schools, homes, dry warehouses ...
A2	Sports centers, cinemas, cold stores, supermarkets ...
A3	Industry, processed foods, kitchens and bathrooms.
A4	Laundries, factories with wet processes, water treatment, swimming pools, vehicle washing.
A5	Steel mills, recycling plants, paper industry, incinerators, fish processors

SP15-		
SP25-		
SP25	HDS35	HDX55
HDX55+		PVDF35

➤ Guarantee of durability in years to the non-perforation of the sheet and non-detachment of the paint granted by the steelmaker. Guideline values, check conditions with our technical department

➤ The minimum primer to obtain guarantees will be 7 microns for SP15-, SP25-, PVDF25, 10 microns for SP25, HDS35, PVDF35, HDX55 and 12 microns for HDX55 +. The minimum coverage will be Z225 except materials with symbol (-) Z100 and (+) Z275

➤ Other materials such as corten, stainless steel or aluminum, on request

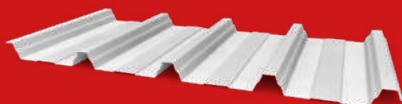
Colors

S1000 Crema Bidasoa	R1018 Amarillo Zinc	R2009 Naranja Tráfico	R3000 Rojo Vivo	S3004 Rojo Baztan	S3009 Rojo Teja	S5008 Azul Barakaldo	R5010 Azul Genciana	S5019 Azul Lago	S5023 Azul Cielo	R6001 Verde Claro
S6005 Verde Navarra	R7015 Gris Pizarra	R7032 Gris Guijarro	R7038 Gris Agata	R8023 Pardo Cobre	R9001 Blanco Crema	S9002 Blanco Ostra	S9003 Blanco Pirineo	R9005 Negro Intenso	R9006 Gris Metalizado	R9010 Blanco Puro

➤ Check availability of stock in these and other colors

Accessories

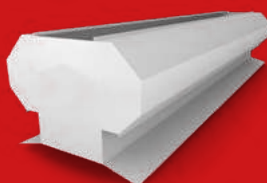
Skylight



Take advantage of natural light using our translucent polyester or polycarbonate profiles.

www.incoperfil.com/skylight

Ventilation



Renew the air, evacuate heat and reduce humidity and the risk of condensation.

www.incoperfil.com/industrial_ventilation

Trimming



Solve any encounter of your project ensuring the tightness and continuity of color.

www.incoperfil.com/trimming

CAT Liverpool (Morelia) - México
3.350 m² INCO 44.6 Perforated, Corten steel



Start designing
your project:

www.incoperfil.com/solution

Incoperfil
Ingeniería y Construcción del Perfil, S.A.
C/Nou, 16-27 Pol. Industrial Mas del Polio
46469 Beniparrell (Valencia) - Spain

Tel : +34 96 121 17 78
Fax: +34 96 121 15 04
www.incoperfil.com - info@incoperfil.com

